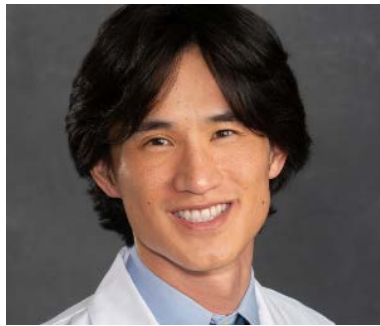


# VCU Pathology Grand Rounds

## “Sinonasal squamous lesions: when "reactive" isn't reactive”

**Yongsang Park, MD**  
Surgical Pathology Fellow  
Department of Pathology  
Virginia Commonwealth University  
School of Medicine



**At the conclusion of this activity, the participant will be able to:**

1. Recognize the common benign/reactive mimics of sinonasal SCC
2. Use a morphology-first algorithm before leaning on p16 or p53
3. Know when a biopsy is underpowered and when rebiopsy is the best diagnosis



ACCME  
ACCREDITED PROVIDER

In support of improving patient care, VCU Health is jointly accredited by the Accreditation Council for Continuing Medical Education (ACCME), the Accreditation Council for Pharmacy Education (ACPE), and the American Nurses Credentialing Center (ANCC), to provide continuing education for the healthcare team.

**Accreditation:** VCU Health Continuing Medical Education of Virginia Commonwealth University Health System is accredited by the Accreditation Council for Continuing Medical Education (ACCME®) to provide continuing medical education for physicians.

**Credit Designation:** VCU Health Continuing Medical Education of Virginia Commonwealth University Health System designates this live activity for a maximum of **1.00 AMA PRA Category 1 Credit(s)™**. Physicians should claim only the credit commensurate with the extent of their participation in the activity.

**Disclosure of Financial Relationships:**

The following planners, moderators or speakers have the following financial relationship(s) with commercial interests to disclose: Nothing to disclose